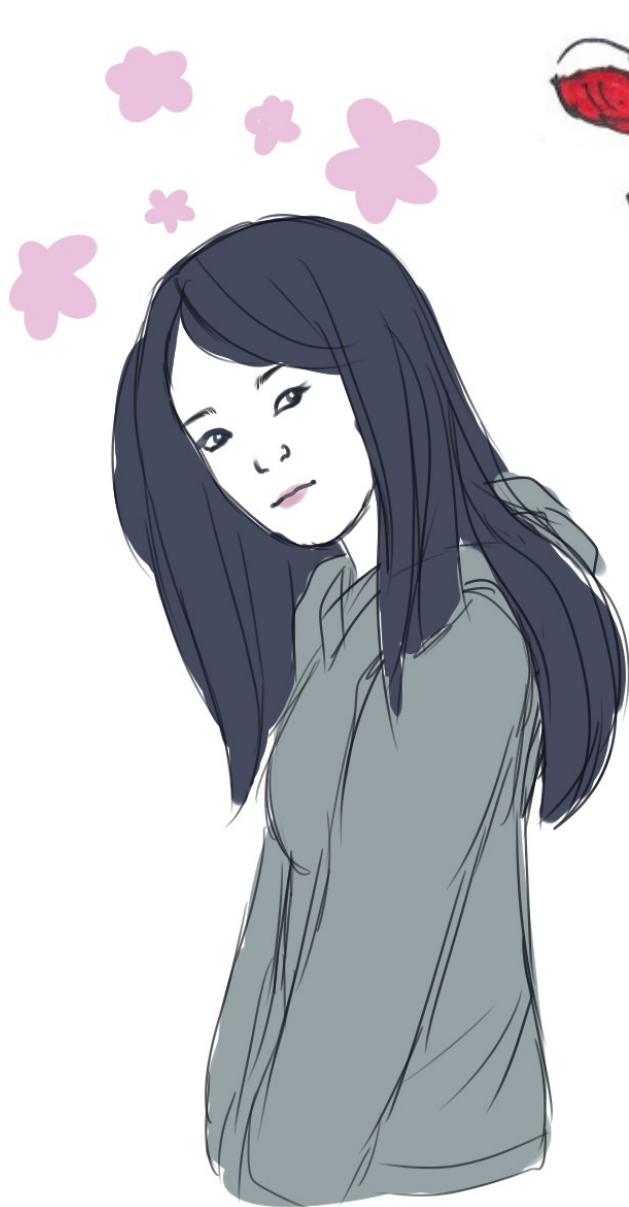


THE
ZINE

DECEMBER
2021

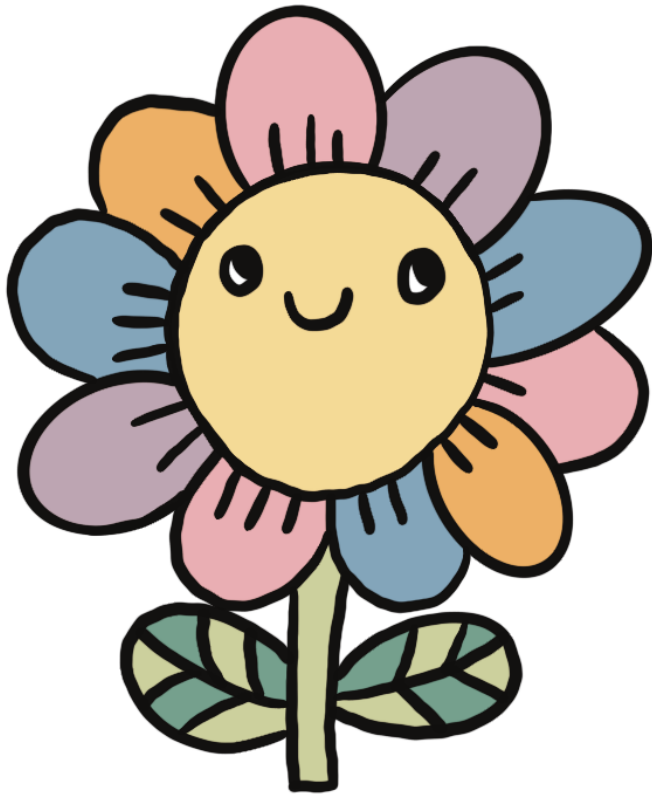
WPL'S TEEN
MANGA
AND ANIME
CLUB

VOLUME 18





WELCOME TO THE ZINE!



Welcome! We, the Teen Manga and Anime Club of WPL, have created this Zine for us and for you, our faithful readers! This is the eighteenth volume, and we hope that you will consider joining our club and contributing your own art, reviews, awesomeness, and love of manga and anime!

Suggestions? Comments? Leave a comment on the WPL Teen Instagram page!

@wplteenzone

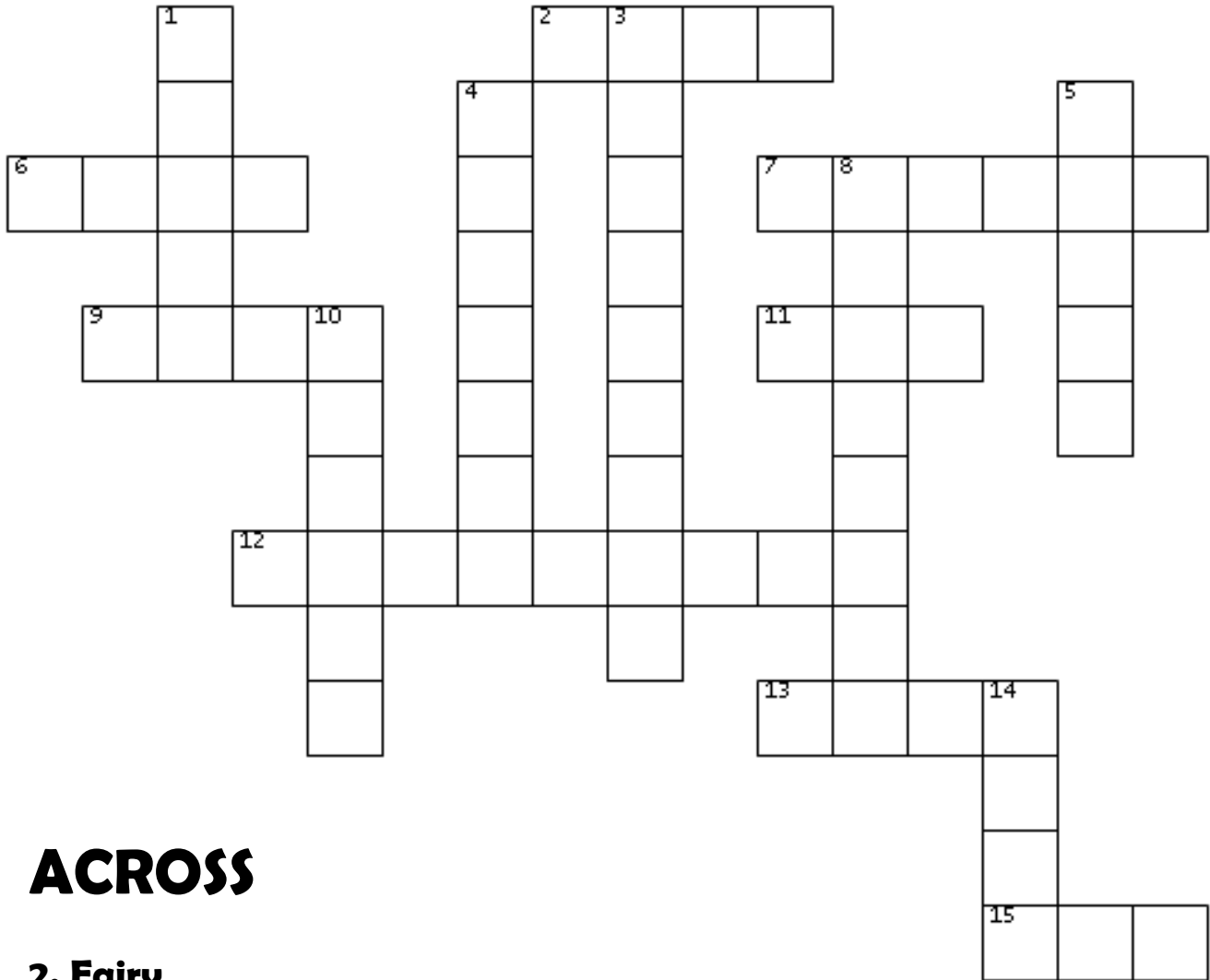
Thank you and enjoy!

~WPL Teen Manga and Anime Club



Manga Series Crossword

Complete the names of the manga series by using the clues down below!
The answers can be found on page 7.



ACROSS

- 2. Fairy _____
- 6. Sailor _____
- 7. Fruits _____
- 9. Ouran High School Host _____
- 11. One-Punch _____
- 12. Assassination _____
- 13. Yona of the _____
- 15. Seraph of the _____

DOWN

- 1. Tokyo _____
- 3. JoJo's Bizarre _____
- 4. Natsume's Book of _____
- 5. Yowamushi _____
- 8. My Hero _____
- 10. Black _____
- 14. Death _____

The Zine Word Scramble

HINT: All of the words below are restaurants found in downtown Waukesha! The answers are on page 7.

1. **ERCSTORHE IDEL**

2. **HET GTSAINEM UPC**

3. **E P P O E L ' S R P K A**
,

4. **F E A C E D S T R A**

5. **U R S K A A N J A A P**

6. **O N D I I V O G L A T E**

WINTER WORD SEARCH



WORD BANK



Blizzard
Chilly
December
February
Fireplace

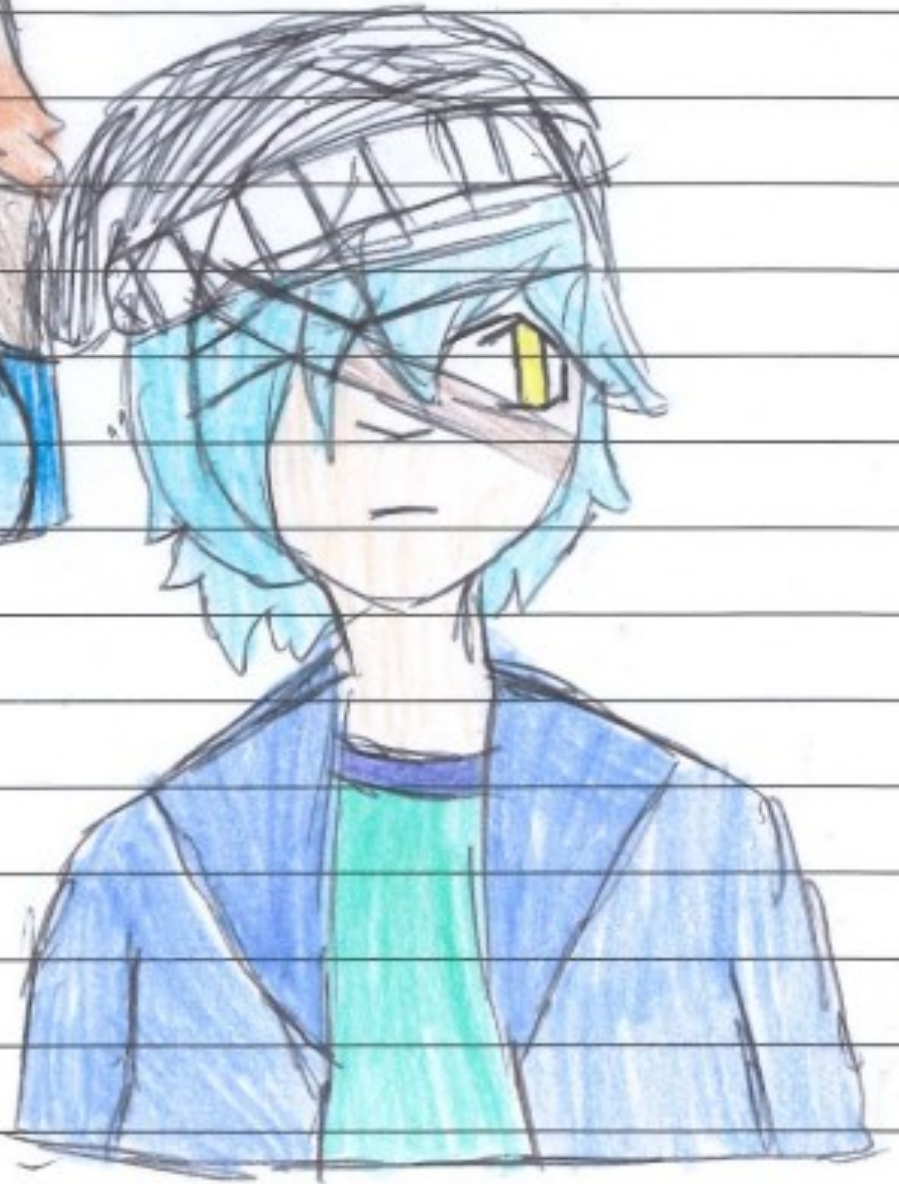
Flurries
Freezing
Frost
Holiday
Hot Chocolate

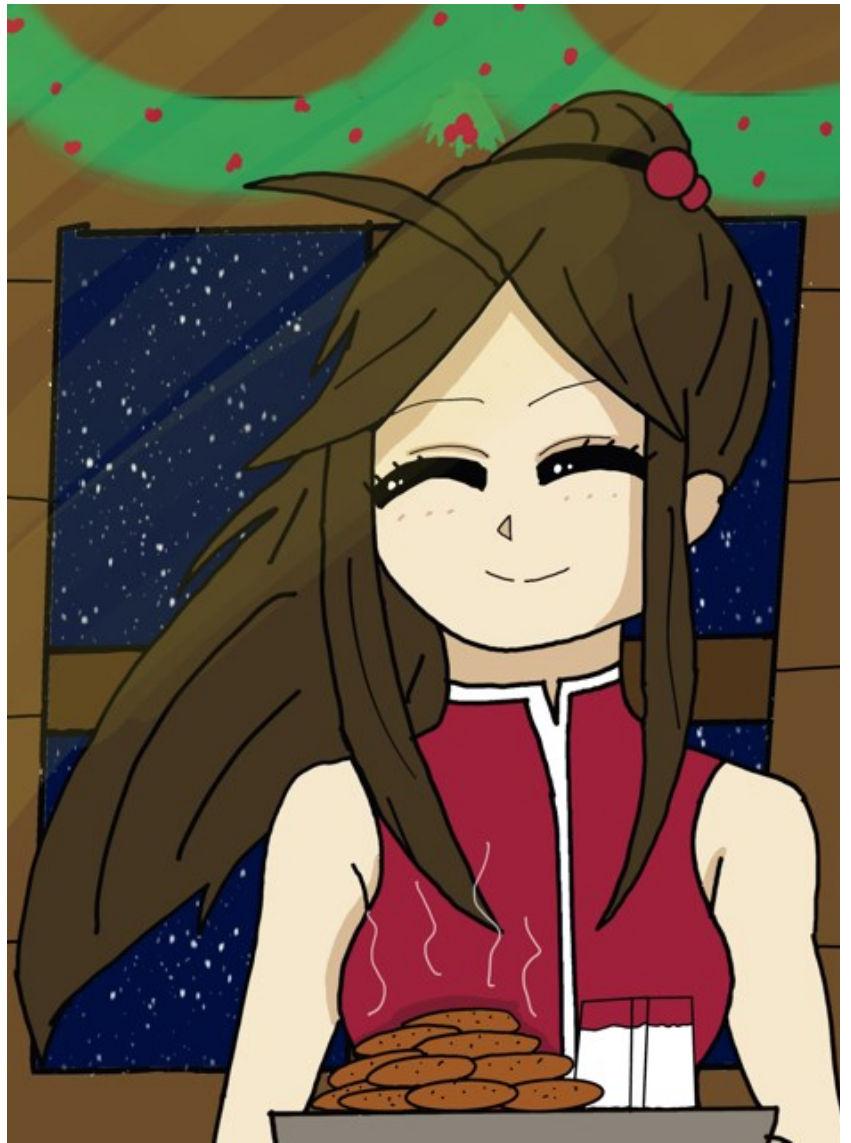
Icicle
January
Mittens
Scarf
Skating

Sledding
Snow Day
Snowflake
Snowman
Winter

F	Q	H	S	C	A	R	F	E	S	G	Q	Q	J	F
S	E	C	O	E	Y	S	H	L	L	G	R	W	Q	S
X	F	C	R	L	N	P	E	H	C	C	R	Y	S	T
P	S	Y	A	E	I	D	Y	B	H	V	I	E	S	D
W	R	K	T	L	D	D	G	V	I	P	K	C	E	Y
E	I	T	A	I	P	N	A	O	L	A	X	C	I	R
B	I	N	N	T	I	E	Z	Y	L	H	E	R	R	A
M	L	G	T	Z	I	K	R	F	Y	M	N	I	R	U
J	H	I	E	E	J	N	W	I	B	S	U	V	U	N
D	E	E	Z	U	R	O	G	E	F	S	D	G	L	A
H	R	A	F	Z	N	W	R	F	R	O	S	T	F	J
F	A	E	T	S	A	Y	R	A	U	R	B	E	F	F
T	X	Z	Y	G	U	R	T	Y	A	D	W	O	N	S
M	F	M	J	Z	O	F	D	S	N	O	W	M	A	N
U	C	E	T	A	L	O	C	O	H	C	T	O	H	Z

Welcome!
To the realm
of
chaos~





RECIPE

ALMOND CHOCOLATES



Ingredients

- 1 12oz. package of dark chocolate chips
- $\frac{3}{4}$ cup whole almonds
- 1 tablespoon vegetable oil
- $\frac{1}{2}$ teaspoon salt
- 1 teaspoon vanilla
- 1 package small foil or paper cups for candy

Instructions

1. Spread all the almonds out on a pan and place in a warm (170°F to 200°F) oven. Let them toast in there until they become aromatic.
2. Pour all the chocolate chips into the bowl of the double boiler. Add the oil, salt, and vanilla, and let the chocolate begin to melt. Stir it occasionally.
3. Take $\frac{1}{4}$ cup of the almonds and chop them finely. Once the chocolate has melted all the way, add the chopped almonds, and mix it together.
4. Set out all the wrappers you'll need, and slowly begin spooning the chocolate into each wrapper. It can be a little messy until you get the hang of it. After filling each wrapper with chocolate, add one or two of the whole almonds on top. You can also add sprinkles instead, if you would like.
5. Once all the wrappers are full, place them all in the fridge to cool and solidify.

Photo and Recipe Source:
www.animerecipes.tumblr.com

Crossword Puzzle Answer Key From Page 2

ACROSS

2. Tail
6. Moon
7. Basket
9. Club
11. Man
12. Classroom
13. Dawn
15. End

DOWN

1. Ghoul
3. Adventure
4. Friends
5. Pedal
8. Academia
10. Butler
14. Note

The Zine Word Scramble Answer Key From Page 3

1. Rochester Deli
2. The Steaming Cup
3. People's Park
4. Café De Arts
5. Sakura Japan
6. Divino Gelato

ANIME PARTY ESSENTIALS

YOU ARE THROWING AN ANIME PARTY! HERE ARE SOME ITEMS WE THINK WOULD BE GREAT FOR YOU TO HAVE!

ANIME TO WATCH

- HAIKYU
- JUJUTSU KAISEN
- FIREBOY AND WATERGIRL
- FATE
- DEMON SLAYER
- FULLMETAL ALCHEMIST
- ATTACK ON TITAN
- KAKEGURUI
- FRUITS BASKET
- SPIRITED AWAY
- OURAN HIGH SCHOOL HOST CLUB
- BLACK CLOVER
- MY HERO ACADEMIA
- ASSASSINATION CLASSROOM
- HUNTER X HUNTER
- JOJO'S BIZARRE ADVENTURE
- DANGANRONPA: THE ANIMATION

GIFTS TO GIVE

- ANIME
- BLANK CD- RS
- HOODIES
- LEATHER GLOVES
- MERCH
- GOODIE BAGS

FOOD TO EAT

- CHEESE, MEAT & CRACKER PLATTER
- RAMEN
- POPCORN
- DIET COKE
- APPLESAUCE
- PIZZA
- SPICY CHICKEN
- POCKY
- CHEAP RAMEN
- FOOD...JUST FOOD

GAMES TO PLAY

- DDR
- MINECRAFT
- FIREBOY AND WATERGIRL
- MARIO KART
- MARIO PARTY
- DDLC
- SPLATOON 2
- SUPER MARIO ODYSSEY
- ROBLOX



Create Your Own Character!

Draw Your Character Below!

Name of your character:

Write a few sentences about your character:

What is your character's biggest secret?

What is your character's greatest ambition?

What is your character's biggest pet peeve?

What are your character's special skills:

Who or what is your character's enemy?

What is your character's favorite hobby?

Character Traits

Hair Color: _____

Eye Color: _____

Height: _____

Age: _____

Style: _____

Home: _____

Favorite Color: _____

Favorite Snack: _____

Occupation: _____

Closest Friend: _____

Good or Evil: _____



Characters We Want to Cosplay

- Edward Elric (Fullmetal Alchemist)
- Shoyo Hinata (Haikyuu)
- Toru Oikawa (Haikyuu)
- Himiko Toga (My Hero Academia)
- Shinobu Kocho (Demon Slayer)
- Ibuki Mioda (Danganronpa)

Best Horror Anime to Watch in October

- Death Note
- Attack on Titan
- Soul Eater



Chifuyu



By: Anna



By: Anna



By: Anna

WHICH IS BETTER, THE MANGA OR THE ANIME? OUR CHOICES:

MANGA:

- OURAN HIGH SCHOOL HOST CLUB
- HAIKYUU
- TOKYO GHOUL
- MY HERO ACADEMIA

ANIME:

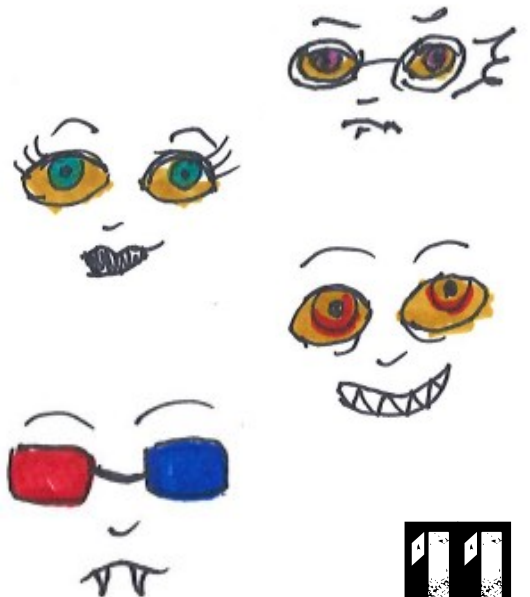
- ATTACK ON TITAN
- MY HERO ACADEMIA
- DEMON SLAYER



By: Anna

Anime: Naruto

Terezi Pyrope





Name: Jon

Age: 16



Axel 141

By: Anna/Hara

CONTRIBUTORS

**THE FOLLOWING TEENS HELPED IN THE CREATION
OF THIS VOLUME OF THE ZINE:**

ALINA

ASHER

CAITI

CONTESSA

CORDELIA

CORI

ELISE

EVAN

FINN

JOSIE

JULIANA

LIBBY

MARISSA

OLIVER

SAMMIE

THANK YOU

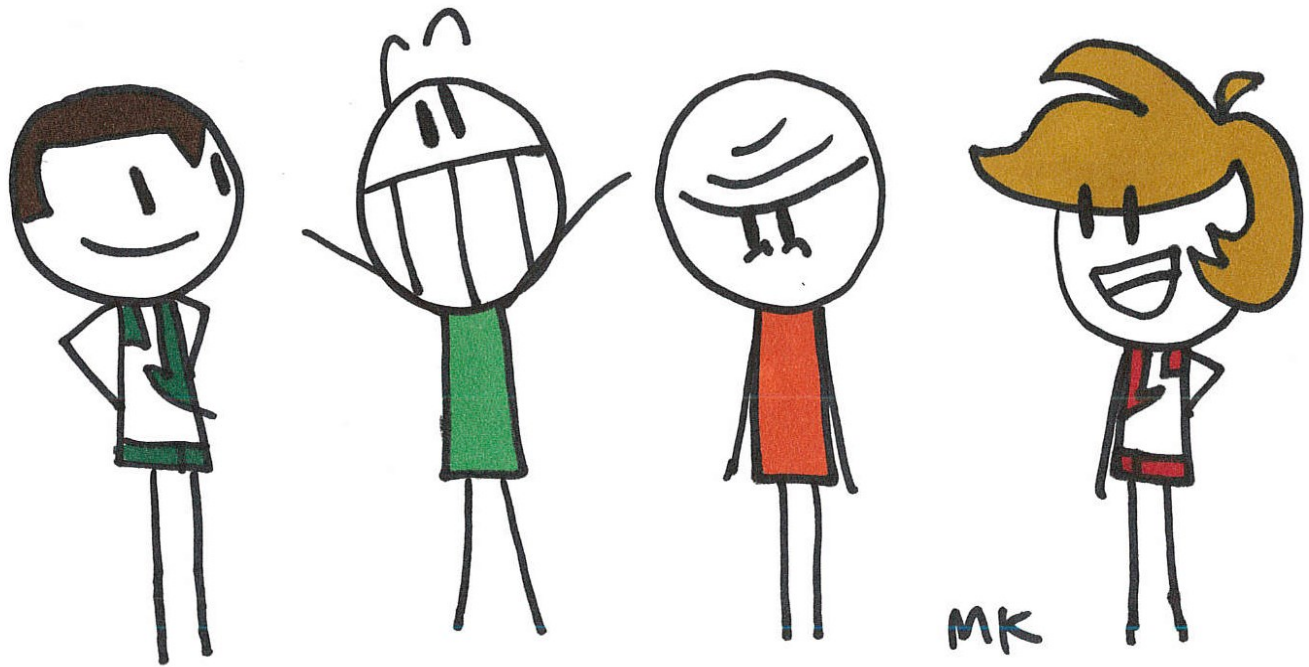
**A GIANT THANK YOU TO THE TEEN MANGA AND ANIME CLUB OF WPL!
THE ZINE WOULD NOT BE POSSIBLE WITHOUT ALL OF YOUR HARD
WORK, DEDICATION, AND LOVE OF MANGA AND ANIME.**

**TO OUR DEAR READERS, THANK YOU FOR READING OUR ZINE!
PLEASE LEAVE US ANY COMMENTS/SUGGESTIONS ON OUR
TEEN INSTAGRAM PAGE: @WPLTEENZONE**

NEW TEEN MEMBERS ARE ALWAYS WELCOME TO JOIN OUR CLUB!

WE HOPE YOU HAVE ENJOYED THIS ISSUE OF THE ZINE!

- CARLEY

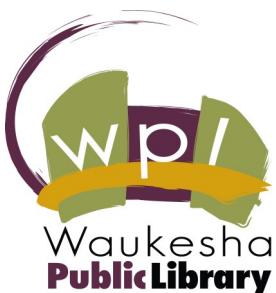


THE ZINE

TEEN MANGA AND ANIME CLUB
WAUKESHA PUBLIC LIBRARY

© 2013

**FOR FREE DISTRIBUTION
DO NOT SELL**



Waukesha Public Library
321 Wisconsin Ave. Waukesha, WI 53186
waukeshapubliclibrary.org
Instagram: @wplteenzone
(262) 524-3682

