

Waukesha Public Library



This world is but a canvas
to our imagination.

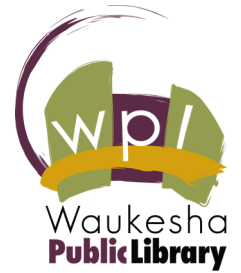
~Henry David Thoreau

Public Art Collection



www.waukeshapubliclibrary.org

Donation Form



Yes! I want to contribute to the Waukesha
Public Library Public Art Fund.
My tax deductible gift of
\$ _____ is enclosed.

Name

Address

City

State

Zip Code

Phone

E-mail

Levels of Giving

Copper \$20 Bronze \$50 Silver \$100 Gold \$250+

☐☐☐☐

Please make checks payable to:
Waukesha Public Library Art Fund

Mail to:
321 Wisconsin Avenue, Waukesha, WI 53186

Display Spaces

The Waukesha Public Library offers a Community Art **Space** for Waukesha County artists to display two dimensional works of art. These works complement the art on permanent display on the Library's first floor. A different artist or group of artists will be featured on a rotating schedule.

The collection, coordinated by the Library's Public Art Committee seeks to:

- present a variety of works by local artists
- help local artists increase their public exposure
- promote art throughout the City of Waukesha City and Waukesha County

Applications are available at the Adult Services Information desk and on the Library's website. Artists interested in exhibiting are asked to contact Joan Quinlan at 262-524-3694 or jquinlan@waukesha-wi.gov



Other available public exhibit space:

- The Community Room is available to display works of art from local and regional organizations.
- Display panels in the Teen Zone are available for the display of art from local middle school and high school art classes or clubs.
- The Children's area offers gallery display space for artwork and creative writing of preschool and elementary school-aged children in Waukesha public and private schools, daycare, nursery schools, and homeschool groups.

Waukesha Public Library

Public Art Collection - Established 2005

Waukesha Public Library's Public Art Collection serves to enrich the community's quality of life through art.

Waukesha Public Library provides an exceptional setting for exhibiting works of art. These pieces of original artwork, in a wide range of media, are accessible to all citizens. They are designed to inspire joy, provoke thought and stimulate dialogue by encouraging exploration and discovery.

The Library's Public Art Committee, established by the Library Board, is charged with overseeing all aspects of the collection. Their recommendations are subject to final approval by the Library Board. All art selections are based on the criteria set forth in the Library's Public Art Policy. The art is funded with private donations from community members and the Friends of Waukesha Public Library. A rigorous application and selection process ensures that the highest quality art is selected.

Members of the Committee, appointed by the President of the Library Board, may include representation from the Library Board, Library staff, the Friends of Waukesha Public Library and the art community, as well as citizens interested in the Library's art collection.

Current Committee members:

Bruce Gay, Library Director

Rose Sura, Library Board Trustee

Lynn Preston, Committee Chair, artist and retired art teacher

Chris Audley, Citizen member

Joan Francoeur, Citizen member

Lynn Gaffey, Artist and gallery owner

Larry Nelson, Citizen member and Friends of Waukesha Public Library Executive Board member

Barb Reinhart, Artist and UW-Waukesha Associate Professor

Julie Stockinger, Artist and retired art teacher

Sylvia Trewyn, Citizen member

Meet the Artists

The Library has acquired works by a group of distinguished local artists whose artwork has become part of the Library's permanent public art collection.

Stephanie Copoulos-Selle

Stephanie Copoulos-Selle is a Professor of Art at the University of Wisconsin-Waukesha. She received her MFA from the University of Wisconsin-Milwaukee. Her work has been exhibited nationally and internationally and is included in collections of: Yale University, Otis College of Art and Design, University of Washington, School of the Chicago Art Institute, Indiana University, Mills College, Quad Graphics and others. In 2008, she was awarded a Women's Studio Workshop Grant and Artist's Book Residency. She works in three mediums: artist's books, prints, and paintings.

The artwork on display is a site specific installation. It utilizes words, images and a time sequence in a manner similar to a book. When reading a book one physically turns the pages, using a certain amount of time. In viewing the "Time Wall", one walks from page to page. Also, like a book, the panels are viewed individually; however, a deeper meaning is achieved after all the parts are put together. The **Time Wall** can be found on the north wall of the library. Acquired in 2012.



Lucien Woodring

Lucien Woodring is an artist and musician currently residing in Waukesha with his wife and two children. Lucien's work is on display at the Almont Gallery downtown.

Specializing in oil painting, Lucien has focused on themes of Americana, every day life, and his unique observations. As a self-taught artist, Lucien has developed his skills and expression into a varied body of work that includes public art and commissioned pieces. Through his work, he aims to authentically depict the spirit of the places he goes and people he meets.

To Kill a Mockingbird is dedicated to former Deputy Director Karol Kennedy and was created for Waukesha Reads 2016. The painting is located on the first floor near the public computer center. Acquired in 2016.



Ann Windell

Ann Windell began her artistic journey after college, a business career, and starting a family. She has been exhibiting and selling art for the last 30 years. She has been part of the Almont Gallery for the last 6 years.

Ann is continually inspired by her personal gardens and the ever changing seasons that Wisconsin experiences. Texture and color of nature are her motivation to try new methods, paints, and tools to create a colorful field or a ridged bark pattern on a tree.

Ann has always believed that ART IS TO SHARE. She has opened her doors to many students ages 4-84 to do just that. She has no problem packing up the van to go to a destination or cleaning up the desk to make room for a couple of art loving souls for the afternoon.

Ann Windell believes that it is important to give back. She has been happy to join other talented Artists for philanthropic opportunities in the Madison area Zoo, for the police and fire departments, breast cancer events, Art Pop and many other school events. Because ART IS TO SHARE.

Everything I Never Told You was created for Waukesha Reads 2018 and is located on a pillar across from the main stairs. Acquired in 2018.



Amy Cropper

Amy Cropper has been an Associate Professor of Art at Carroll University since 1995. Cropper teaches sculpture, drawing, and a senior capstone course. She holds a Master of Fine Arts degree from the University of Iowa.

Cropper's work ranges from drawings to sculpture to installation and, since the early 1990s, has been concerned with notions of nature and culture. Her work has been featured at numerous exhibitions. She is interested in creating art for public spaces because of the opportunity it offers to instill art into everyday activities.



Art in public spaces, like a library, allows art viewing to simply “happen,” as one goes about other activities.

Cropper believes this “accidental viewing” gives both art and the imagination a place in daily life, which is critical for human development.

Garden House I and ***Garden House II*** hang in the Library's Carnegie Reading Room. The pieces are painted textiles with plant and geometric patterns that create new patterns which fluctuate between rigid and fluid. Acquired in 2009.

Chuck Weber

A lifelong resident of Waukesha County, Chuck studied art at St. Norbert College. Following the completion of his MBA from Marquette University, this "right brain" influence led him to a career in advertising, where he was Creative Director and Principal of a multi-media agency.

Chuck is a member of the American Society of Portrait Artists as well as the Portrait Society of America, the Arts Alliance of Waukesha County and is a past member of the Membership Committee of the Milwaukee Art Museum. He is a member of the League of Milwaukee Artists, the West End Artists Association, and the Waukesha Creative Arts League.



Chuck now devotes a significant amount of his time to his one "true" passion, fine art. His preference for oils and an impressionistic style translate into high energy works, featuring sun-lit subjects that are saturated with color. His unique "Renaissance" style involves painting his subjects "backwards," from dark to light on sanded panels. His



subjects explore combinations of the color spectrum in light and shadow, and allow his paintings to express power and vibrancy.

Bringing Them Home and ***Haying*** were selected and funded by a private donor and they are located on the left wall as you enter the ramp of the Carnegie Reading Room. Acquired in 2010.

Peggy Thurston Farrell

Peggy Thurston Farrell, an Assistant Professor of art at Carroll University since 1991, has been extensively exhibited and collected. She holds a Master of Fine Arts degree from the University of Wisconsin-Milwaukee.

Over the years, her art has evolved from the two-dimensional print medium to collaged, painted, and silkscreened three-dimensional paper and wood constructions.

Thurston's work has been shown in both solo and group exhibitions across the United States, Peru, Japan and locally, including the Milwaukee Art Museum, Tory Folliard Gallery and the Wisconsin Painters and Sculptor's Biennial. Peggy's current works are colorful and exciting collages of painted and silkscreened papers. Much of her work explores the concepts of containment and the interaction of the inner and outer worlds of structures.



Evolution of Expression, a series of five silkscreen relief pieces portraying the evolution of language, communication and writing, is displayed in the New Book area of the Library. Acquired in 2008.

Jeanette Fellows

Jeanette Fellows is a self-taught artist. She has displayed her works since 2012 at various galleries and exhibitions throughout Waukesha and Milwaukee. She was showcased in the May 22, 2013 Milwaukee Magazine and was the featured artist in the October 2013 Collective Evolution Magazine. She recently was chosen to create a painting to represent her tribe (Akimel O'Odham) to be permanently displayed at the Gila River Indian Community Utility Authority in Chandler, AZ.

Fellows' artwork is done in a photo realistic style, usually in black and white. Her paintings are based from photographs that she has taken and then recreated in acrylic paints on canvas. Her work honors the rich Native American culture that still exists within the Waukesha community and surrounding areas.

Her goal is to continue to use painting as a way of sharing her experiences and helping to expand people's understanding of the world around them.



Oneida Girl, an acrylic on stretched canvas, is beautifully portrayed in the stunning contrast of black and white. It is located on the northwest wall of windows near the native America effigy mounds. Purchased with a grant from the Waukesha County Community Foundation / Donald J. and Betty Lou Tikalsky Community Fund. Acquired in 2015.

Bill Taylor

This artist first appeared on the Milwaukee art scene in the late 1950's as a watercolorist. Over the years, Bill Taylor's works have appeared in a number of salons and restaurants in Milwaukee and Waukesha. He also exhibited at many juried art shows and won numerous awards. In addition, he has completed large, colorful, outdoor murals, mosaics and restorations in downtown Waukesha since 1998. Taylor has taken various watercolor and oil painting courses at Layton School of Art (now MIAD), Milwaukee County Art Museum, and Cardinal Stritch University.

Taylor believes that "art plays an essential role in shaping daily communications because it is vivid, instantaneous and has the power to strike us with a beauty of form and color that opens us to others and transforms drabness into excitement in the process".



Taylor's wall sculpture highlights significant areas of accomplishments, inventions and events that have influenced the course of history. The sculpture is comprised of books in various colors, with each book having a symbol representing a different theme

such as voyages of exploration, mathematics, architecture and inventions.

Cavalcade of History and Civilizations, Ideas that Changed the World is located on the south wall of the center atrium. Acquired in 2015.

Marcia Schneider

Marcia Schneider of Waukesha has been living the life of an artist since she can remember. Although she has been painting and sculpting in many different mediums throughout her life, Marcia's current focus is working with watercolor and rice paper in the batik method.

The Library purchased this unique collection which depicts different birds from Wisconsin around the main subject, the Great Blue Heron. Each bird appears to be curiously fascinated by the heron. This beautifully crafted artwork was dedicated in honor of former Library Director Jane Ameel.

Feathered Fascination is located in the Carnegie Reading Room. Acquired in 2012.

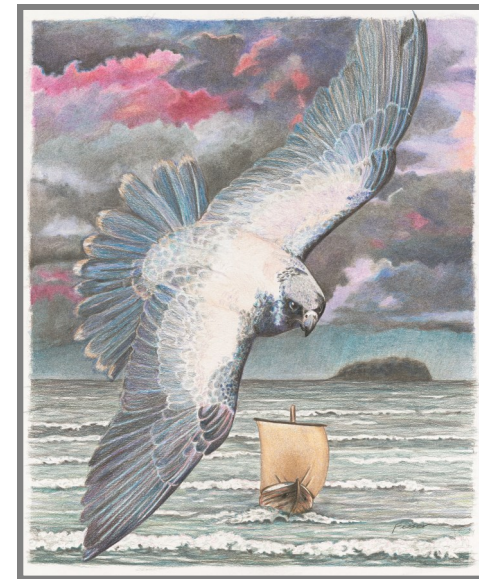


Laura Fesser

Laura Fesser, a Wisconsin resident, lives, works, and teaches in the Waukesha area. She received a degree in Art Education at Northern Illinois University, and has taught at a local private school for several years.

Laura works in several different media. Drawing and painting are her first loves. Polymer clay is the second love. Her work is currently displayed at Almont Gallery in Waukesha.

Public works Include "Tree of Hope" done in polymer clay at Waukesha Memorial Hospital, and a playable guitar, also done in polymer clay, at Almont Gallery.



A Wizard of Earthsea was created for Waukesha Reads 2015. It is located on a pillar wall across from the main stairs. Acquired in 2015.

David Fode

David Fode was trained in drawing and illustration at the American Academy of Art in Chicago and began his career illustrating various periodicals in the United States and Europe. In 1999, Fode began working exclusively in stained glass, primarily in restoration and conservation. Fascinated by the idea of using light itself as a medium, Fode made a careful study of traditional means and methods used to manipulate light in painted designs.

Fode currently designs and paints new stained glass for churches, businesses and private homes using the styles and traditional techniques found in the 19th century works that originally inspired him.



This unique stained glass piece is set in an illuminated box. It embodies a classical theme done in a traditional style...with a slightly more recent tune, which lies hidden in this piece.

Serenade is located near the curved bench and glass wall, just past the Special Services desk. Acquired in 2008.

Janet Roberts

Janet Roberts received a degree in Fine Arts in 1966 from Indiana University and has been showing and selling her oil paintings ever since. After painting the landscape for over 30 years, she became intrigued with incorporating old photos with vintage fabric and wallpaper on canvas. These ghostly images seem to come back to life when depicted in oil, and although most of the subjects are total strangers, they soon feel like well-known friends and family. The transparency of the paint in places is intentional, as it allows the fabric or paper to show through, thus heightening the sense of age and suggesting that the viewer is catching a glimpse of an ephemeral memory.

Robert's paintings have been in many juried shows and represented in various galleries. While she was living in London, England in the early 80's, one of her pieces was accepted into the annual Royal

Academy of Art Summer Exhibition. Her paintings are in the collections of many public institutions, including the Rehabilitation Hospital of Wisconsin, Northwestern Mutual buildings in Milwaukee and Franklin, North Shore Country Club in Mequon, Northbrook Public Library in Northbrook, IL and Mercy Hospital in Cedar Rapids, IA.

Tradition on the Line is located in the media area. Acquired in 2008.



Barbara Reinhart

Barbara Reinhart is an Associate Professor of Art at the University of Wisconsin-Waukesha where she has taught various courses in the Art Department since 1996. She received her MFA from the University of Wisconsin-Milwaukee in 1988 and her BA in 1976 from Cornell College in Mt. Vernon, Iowa.



Her paintings and figurative clay sculptures have been shown in solo and group exhibitions throughout the country and included in the book, "500 Figures in Clay."

Reinhart's piece is an oil painting on canvas completed in 2011. It combines the observed and the invented, depicting five figures gathered around a kitchen table. The open-ended narrative seeks to invite the viewer to participate in making connections between the figures. The process of seeing may be combined with memory, recognition and reconsideration of the familiar as the visual relationships are explored.

Do You Realize? is located to the north of the Community Art Space wall. Acquired in 2012.

Michael Stanford Foster

Michael Foster is a Waukesha South High School art teacher who has spent a career developing a teaching technique that empowers students to develop their own ideas and become their own insightful instructors. He earned a Master's degree in Fine Arts from Cardinal Stritch University in 2005. Foster was the 2006 winner of the Hidden River Art Festival's 'Best in Show' (Sharon Lynne Wilson Center, Brookfield) and staged a solo exhibit there the following year.

Michael Foster uses his natural interest in working with people to find the primary subject matter of his art: the human figure. His art focuses the attention on the subject, with minimal detail in the background so that the finished piece harmonizes with the subject.



Foster was commissioned to produce a series of oil paintings for the Waukesha Public Library. Local residents were used as models. ***Sensing the Whole*** is on display in the entrance to the Library. Sponsored by the Friends of Waukesha Public Library, this piece was acquired in 2006.

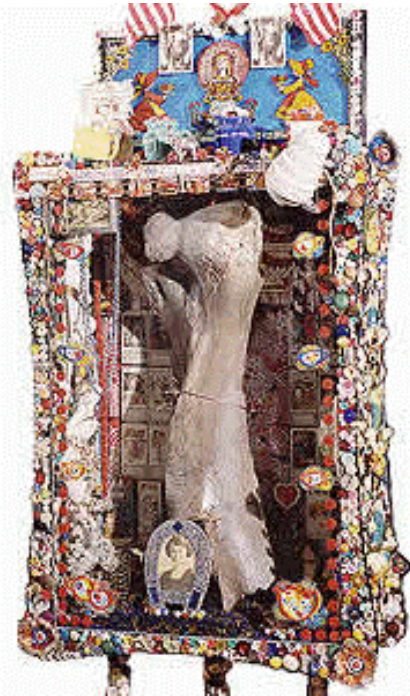
Gary John Gresl

Gary John Gresl, a native of Manitowoc, has been featured in exhibitions throughout Wisconsin and the Midwest. He has received numerous awards for his work, including multiple 'best in show' awards and jurors' selections. He was a Kohler Arts and Industry artist in residence at the Kohler Center for the Arts, Sheboygan, and received a Mary Nohl Artist Fellowship and a 2009 Wisconsin Visual Art Lifetime Achievement Award.

He was the founder and former co-chair of the Wisconsin Visual Art Lifetime Achievement Awards, a three term president of Wisconsin Visual Artists, Inc., as well as one of the co-founders of the Milwaukee Visual Arts Roundtable. He

received a Master's degree from UW-Madison, had a career as an antique dealer and specialized in directions and techniques of assemblage sculpture.

Gresl donated one of his more significant sculptures to the Library. ***Giant Bone from Widow Fischer's Quarry*** is displayed near the first floor stairwell. Acquired in 2009.



Tom Rauschke

From the beginning Tom Rauschke's work has been about trees. The first attraction was to the wood itself, in its raw form, "tree parts". He loved all of it, the color, the grain, the knots, the bark, and even the cracks. For him it was an obvious choice, and it grew everywhere around him. All different types, most of it free, and ready to work. All he had to do is figure out a way to remove the parts that he didn't want. That's where tools and techniques come in.

The mobiles purpose is to fill a space with form, color, and movement, and that function they serve fully well. For over thirty years Tom has been in-

corporating mobiles into his wood sculptures. These mobiles were generally very small as they often "flew" within the sculptures, adding an aspect of movement inside the form. A small flock of crows, a school of fish, or leaves falling from a tree, these mini-mobiles also brought an element of narrative to the piece.



Tom received a BFA from University of Wisconsin - Milwaukee in 1973 and has been a professional artist since 1977. His work is represented in numerous public, corporate, and private collections. He currently lives outside Palmyra, Wisconsin, but was a regular visitor to the Waukesha Library since he could walk.

Sandhill Cranes is located in the north atrium. Acquired in 2018.

Casey Puetz

Casey Puetz is an award-winning, published fiber and mixed media artist whose work has been juried into exhibits including, but not limited to, the Whistler House Museum of Art, the Gerald Ford Museum and Presidential Library, and the Manhattan Arts International Gallery. Additional venues include the Rocky Mountain Quilt Museum, the LaConner Quilt Museum, the Arts Center Great Hall in Christchurch, New Zealand and the Third International Textile Symposium in Tbilisi, Georgia.



Casey is an active member of several professional art quilt and fine art organizations. She has been published in Studio Art Quilt Association's Portfolio 14, 15 and 16 which is circulated to over 1,500 art galleries and interior designers nationwide. Casey teaches locally and is known for promoting a creative and collaborative environment in which to learn. She takes great pleasure in both touching and manipulating fabric and various embellishment possibilities.

Soul Mates is a privately funded commission gifted to the Library, located on the east wall of the lobby area. Acquired in 2010.

Willis Guthrie

Willis Guthrie, Professor Emeritus from Carroll University, was the Chairman of the Art Department and taught art courses at Carroll from 1946 through 1983. He was raised in rural Iowa and attended the University of Iowa where he was a graduate student of Grant Wood.

Guthrie began his career as a painter in the American Regionalism style, but soon realized his passion was assemblage, the art of combining seemingly disparate items into something new. He loved going to rummage sales, junkyards and resale stores. He'd bring home items to add to his pile of objects and then, with his eye for design, find just the right shape, color or texture in a piece of rummage that was perfect for a sculpture he was composing.



Willis was also a creator, along with Team Guthrie, of the *Red Hot Red*, 10 foot tall guitar for the 2012 Waukesha Gibson GuitarTown celebration.

Hidden Witch, generously donated by Guthrie is a wonderful example of his assemblage art. It is located on the first floor near the Rental Collection. Acquired in 2012.

Tom Hicks

Waukesha artist Tom Hicks gifted his early creations to family, friends and fundraisers before retiring from his ad agency career. Since then, he has produced a large catalog of artwork, which he has shown in multiple exhibits and at the Almont Gallery in downtown Waukesha.

Hicks' paintings are large, bright and entertaining. His content is inspired by his quirky view of the objects and people around him. His artwork conveys a childlike innocence, simple and always fun! The titles of his creations work with his distinctive style to shock or entertain us with his irreverence, irony and humor.

Partly Cloudy, generously donated by Hicks, is a delightful addition to the Library's art collection. It is located on the second floor bridge above the elevator doors near the Children's Area. Acquired in 2015.



David Powell

David A. Powell is an artist/sculptor living in Delafield. He earned a Bachelor of Arts and Education Degree from Carroll College (now University) in Waukesha and holds a Master's Degree in Visual Arts from Cardinal Stritch University in Milwaukee.

After a successful teaching career in Waukesha and Shorewood, Powell has now devoted himself to his sculptures and designing sets for Summer Stage of Delafield. His work has been exhibited in the greater Milwaukee Area and has received numerous awards. His artwork is rooted in the Dadaist and Surrealist Movements. He creates visual tales through objects of historical significance or invented significance; melding bits of history, literature, drama, science and fiction.

The sculpture Powell created for the Library's collection is an homage of sorts to Increase Lapham, who is considered "Wisconsin's first great scientist" and "Father of the U.S. Weather Service." He was among the most curious men to ever live in Wisconsin. It also gives a nod to two of Wisconsin's other creative powerhouses, Georgia O'Keeffe and Frank Lloyd Wright. This homage to science, exploration and the arts is fitting in a building donated by Andrew Carnegie, a place where curiosity can be satiated. We hope that your curiosity is piqued as you peruse this artwork.



Increase Curiosity is located in the alcove to the right of the ramp as you enter the Carnegie Reading room. Acquired in 2015.

Connie Pelzek

Local artist Connie Pelzek received her Bachelor of Fine Arts degree in Art Education from the University of Wisconsin-Milwaukee. After teaching Art locally for several years, she decided to try something new, and received a degree in Interior Design from Mt. Mary College. She worked for 28 years as a Facilities In House Interior Designer at Rockwell Automation in downtown Milwaukee. During that time, she also did residential faux finishing and mural work. After retirement, Connie returned to her first love: painting. She has participated in art festivals throughout the country and is now exhibiting at Almont Gallery in Waukesha. Her work has been collected residually and by several Wisconsin Corporations.

Pelzek has a love for nature motifs, bold color, and complicated textures and patterns. She has combined these elements in her acrylic paintings using a variety of painting techniques. Billowing clouds, lacy branches, and the patterns created by layers of soft leaves are explored in her atmospheric canvases.

With her background in Interior Design, Pelzek believes that the display of art in personal and public spaces should be an enriching and integral part of daily life.



True Grit is located on a pillar across from the Teen Zone. Acquired in 2017.

Jeff Homar

Jeff Homar earned a Bachelor of Fine Arts and a Master of Science in Art from the University of Wisconsin-Milwaukee. He spent time as an art teacher in the School District of Cudahy and at MATC extension. Jeff has exhibited his work extensively, has won numerous awards and is currently exhibiting work at the Almont Gallery.

While the focus of Homar's art for the last 12 years has been on creating Art Boxes that incorporate watercolor paper and other materials into boxes inspired by observing nature, listening and reacting to music, the Library has purchased a previously completed canvas collage. **Urban Alley Serene** features

a dynamic space being pinched between the two buildings that flank the slit of sky. The clarity and strength of the windowed background building helps define this space. The image from the artist's photographic slide was projected onto a large canvas and pieced together by cutting and gluing a variety of found canvas together, upon which color was then applied using acrylics and oils.



Urban Alley Serene is located on the first floor and is adjacent to the rotating Community Art wall. Acquired in 2012.

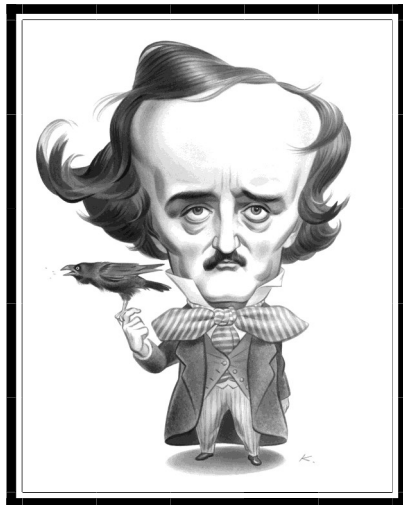
John Kascht

A native of Waukesha, John Kascht's satirical drawings have appeared on the pages or covers of: TV Guide, The New York Times, Entertainment Weekly, Rolling Stone, Esquire, GQ, Time, Newsweek, New York Magazine, The New Yorker, The Washington Post, The Wall Street Journal, LIFE, The Los Angeles Times, Golf Digest, Forbes, The Village Voice, The New York Observer, US News and World Report, Reader's Digest, W, Vibe, Oprah, Glamour and MAD magazine, among others. His work also has appeared on book covers, billboards, Broadway marquees and more than a few cocktail napkins.

John is among a handful of caricaturists whose work is collected by The Smithsonian Institution's National Portrait Gallery.

Kascht created his Poe caricature for Waukesha Reads 2014.

Edgar Allan Poe is located on a pillar wall across from the main stairs. Acquired in 2015.



William Lemke

Bill Lemke's interest in landscapes began with his many trips out west with his family growing up in the 1960's. Through these trips, he developed a great appreciation for the beauty offered in unique plants, water and rock formations. While in high school, he took his first graphic arts class which included a unit on photography which forever changed his life. He went on to study photography first formally, then informally while gaining experience in both fine art and commercial photography.

Bill chooses to work in black and white because it encourages he and the viewer to concentrate on texture, tonality and the emotional qualities of light. His images are created using either a 4"x5" or 8"x10" film camera followed by traditional however tedious photographic darkroom processes resulting silver gelatin prints. Each print is individually exposed and hand processed following archival standards set forth by Ansel Adams. "My ultimate goal is to inspire viewers to develop a deep appreciation for nature and a desire to preserve and protect our environment."

Waukesha native William Lemke is an award-winning photographer. The photograph purchased by the library was shot at Minooka park, right across the street from where Bill grew up.

Maple Tree in Fog is on located near the first floor music collection. Acquired in 2017.



Kay Kurz

A native of Germany, Kay Kurz (1922-2015) immigrated to the United States in 1938 at the age of 16. She studied at the City College of New York and Iowa State University. She received her B.A. from Alverno College in Milwaukee.



Her experiences living in Hitler's Germany are reflected in many of her earliest paintings. She went through many different stages in her work, with inspiration coming from a

range of sources, including trips to Italy and flowers in her own backyard. Kay particularly loved to experiment with color, form and subjective moods. "Color," she said, "has an endless range of possibilities and variance, and I find a particular pleasure in exploring it."

In 1985 and 1988, Kurz was the recipient of fellowships from the Virginia Center for the Creative Arts. She exhibited extensively throughout Wisconsin and was a lecturer of Art (emeritus) for more than twenty-five years at Carroll College (now Carroll University) in Waukesha.

Kurz donated one of her favorite paintings from her collection titled ***Festival of the Spirit***. "It's from a period in my painting when I dealt with imaginative and fantastic images." Kay's swirling ribbons of color, the patterns and dancing movement in this painting, make you feel like you are at a festival. As you study this unique piece located near the Teen Zone, you can't help but smile and enjoy the fun. Acquired in 2011.

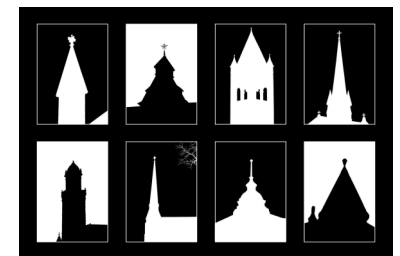
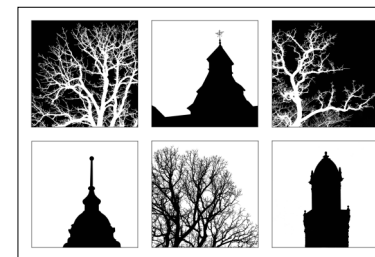
Philip Krejcarek

Philip Krejcarek is a Professor of Art and the Co-chairman of the Art Department at Carroll University. He holds a Master's degree in Fine Arts from University of Wisconsin-Milwaukee.

Philip Krejcarek explores the world of traditional photography and electronic imaging with a fine art approach. He guides his students through the theory and practice of the steps necessary to master the many variables involved in successful imaging. Krejcarek uses traditional photography as the foundation for his work and then manipulates the images with electronic software to create unique pieces of art.



His black & white photographs of landmark buildings in the City of Waukesha, ***Waukesha Cityscapes I, II, & III*** can be viewed on the south wall in the center atrium of the Library. The black metal sculptures, ***Waukesha Skyline*** are located on the aerial bridge, above the photos that inspired them. Acquired in 2006.



1. "Time Wall"

Stephanie Copoulos-Selle

2. "Garden House I" & Garden House II

Amy Cropper

3. "Untitled"

Charles Dix

4. "Evolution of Expression"

Peggy Thurston Farrell

5. "Oneida Girl"

Jeanette Fellows

6. "A Wizard of Earthsea"

Laura Fesser

7. "Serenade"

David Fode

8. "Sensing the Whole"

Michael Stanford Foster

9. "Giant Bone from Widow

Fischer's Quarry"

Gary John Gresl

10. "Hidden Witch"

Willis Guthrie

11. "Partly Cloudy"

Tom Hicks

12. "Urban Alley Serene"

Jeff Homar

13. "Edgar Allan Poe"

John Kascht

14. "Waukesha Cityscapes

I, II, & III"

Philip Krejcarek

15. "Waukesha Skyline"

Philip Krejcarek

16. "Festival of the Spirit"

Kay Kurz

17. "Maple Tree in Fog"

William Lemke

18. "True Grit"

Connie Pelzek

19. "Increase Curiosity"

David Powell

20. "Soul Mates"

Casey Puetz

21. "Sandhill Cranes"

Tom Rauschke

22. "Do You Realize?"

Barbara Reinhart

11

"Partly Cloudy"

Tom Hicks

Painting can be found above the elevator on the second floor bridge.



**Waukesha Public Library
Self-guided Public Art Tour**

23. "Tradition on the Line"

Janet Roberts

24. "Feathered Fascination"

Marcia Schneider

25. "Cavalcade of History & Civilizations, Ideas that changed the World"

Bill Taylor

26. "Bringing Them Home & Haying"

Chuck Weber

27. "Word Work/Waukesha"

Charles Wickler

28. "To Kill a Mockingbird"

Lucien Woodring

29. "Everything I Never Told You"

Ann Wndell

Revised 11/1/18